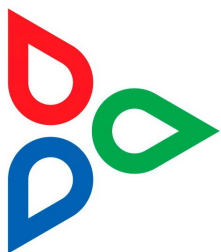




Valves



IFW PRODUCTS LLC
FIRE PROTECTION

About Us

IFW Products LLC is a dynamic, energetic company located near Boise, Idaho. Originally established in Orange County, California in 2017, we relocated to the Boise area in 2019. Our business is to serve the fire equipment needs of the construction industry: new commercial construction, tenant improvements, and inspection, testing & maintenance (ITM). Our experience in this specialty enables us to offer one of the largest selections of first line fire protection equipment available from a single source. To serve the needs of this diverse clientele we offer:

- Quality products from established, reputable manufacturers
- Prompt shipment from stock on popular items
- Access to complete manufacturer product lines
- Responsive customer service with extra attention paid to getting things right the first time
- A resourceful, "can do" attitude

This brochure is designed to acquaint you with the various products we have to offer. We welcome your inquiries and invite you to put our expertise to work for you.

Featured Brands

AGF Manufacturing
Ames Fire & Waterworks
American AVK

Bray Controls

Dixon Valve & Coupling

Febco

Midland Industries
Mueller Steam Specialty

Reliable Automatic Sprinkler

Sierra Fire Equipment
Sigma Piping Products

United Brass Works

Val-Matic

William E. Williams Valve Co.

Get in Touch

Telephone

208.314.7475
888.675.0190

Fax

208.672.3003

Internet

www.ifwproducts.com

Email

info@ifwsales.com

OS & Y Gate Valves



Used as a system control valve

- Outside screw-and-yoke design allows visual confirmation of valve's open or shut position
- Accepts most supervisory switches
- Ductile iron body
- Bronze trim
- Resilient wedge
- Flanged ends
- 300 PSI rated
- UL listed
- FM approved

Sizes: 2-1/2" to 12", larger sizes by request

Variation: With grooved ends or flange x groove ends

NRS Gate Valves



Used as a system control valve on underground fire main lines

- Non-rising stem (NRS) design with mounting plate for indicator post
- Ductile iron body
- Bronze trim
- Resilient wedge
- Flanged ends
- 300 PSI rated
- UL listed
- FM approved

Sizes: 4" to 12", larger sizes by request

Variation: With mechanical joint ends

Indicator Posts



- Used to operate underground NRS gate valves
- Mounts to any NRS gate valve equipped with a standard post indicator plate
 - Adjustable barrel
 - Window with OPEN and SHUT indications
 - Padlock hasp to secure wrench
 - Accepts most supervisory switches
 - UL listed
 - FM approved
-

Butterfly Valves



- Used as a system control valve
- Provided with a "flag" indicator allowing visual confirmation at a glance of the valve's open or shut position
 - Built-in supervisory switches eliminate the need for external switches
 - Ductile iron body & disc
 - Enclosed gear operator with handwheel
 - Choice of grooved ends, wafer style or lug style body
 - 175 or 300 PSI rated
 - UL listed
 - FM approved

Sizes: 2-1/2" to 8"

Swing Check Valves



Used to prevent reverse water flow in fire protection systems

- Self-closing clapper design
- Ductile iron body
- Bronze Trim
- Flanged ends
- 300 PSI rated
- UL listed
- FM approved

Sizes: 3" to 10"

Variation: With threaded ends, grooved ends, or threaded x grooved ends

Wafer Check Valves



Used to prevent reverse water flow in fire protection systems

- Design permit horizontal or vertical water flow
- Spring loaded single clapper design
- Ductile iron body
- Bronze trim
- O-ring seal
- 250 PSI rated
- UL listed
- FM approved

Sizes: 4" to 8"

Riser Check Valves



Used to maintain system pressure and initiate alarm signal, typically by use of a flow switch • Simpler than a standard alarm check valve, lower installation costs • Ductile iron body with brass & stainless steel trim, EPDM seat ring • 250 PSI working pressure • Grooved ends • UL listed • FM approved

Sizes: 2" to 6"

Strainers



Used to filter debris and foreign matter from fire protection water supply • Available in "Y" pattern or basket style • Cast or ductile iron body • Stainless steel screen • Flanged or grooved ends • UL listed and/or FM approved models available

Sizes: 2-1/2" to 12" and larger

OS & Y Gate Valves



Used as a system control valve • Outside screw-and-yoke design allows visual confirmation of valve's open or shut position • Accepts most supervisory switches • Bronze body & trim • NPT female threaded ends as per ANSI B2.1 • 175 PSI rated • UL listed • FM approved

Sizes: 1" to 2"

Bronze Butterfly Valves



Used as a system control valve • Provided with a "flag" indicator allowing visual confirmation at a glance of the valve's open or shut position • Built-in supervisory switches eliminate the need for external switches • Bronze body • Enclosed gear operator with handwheel • Choice of grooved or threaded ends • 175 PSI rated • UL listed • FM approved

Sizes: 1" to 2-1/2"

Globe Valves



Used as a trim and drain valve in fire sprinkler systems • Bronze body • NPT female threaded ends as per ANSI B2.1 • Rubber seat disc • Metal handwheel • 200 PSI rated

Sizes: 1/4" to 2"

Angle Valves



Used as a trim and drain valve in fire sprinkler systems • Bronze body • NPT female threaded ends as per ANSI B2.1 • Rubber seat disc • Metal handwheel • 200 PSI rated

Sizes: 1/4" to 2"

Swing Check Valves



Used to prevent reverse flow of water in fire protection systems

- Bronze body • NPT female threaded ends as per ANSI B2.1
- Bronze clapper • Rubber seat disc • 200 PSI rated

Sizes: 1/4" to 2"

Gauge Test Valve



Allows inspection and/or replacement of sprinkler system gauge without shutting off entire line • Cast bronze • Rising stem • Screwed bonnet • Rubber seat disc • Metal handwheel • NPT female threaded ends as per ANSI B2.1 • 400 PSI rated

Size: 1/4"

Ball Valves



Used as a sprinkler system trim or for manual deluge system shutoff • Quarter turn operation • Forged brass • Full port • Self-cleaning chrome plated ball • PTFE seat • Blowout proof stem • NPT female threaded ends as per ANSI B2.1 • UL listed from 1/2" through 2" sizes

Sizes: 1/4" to 2"

Y-Strainers



Used on branch lines to filter debris and sediment from sprinkler and deluge system piping • Also used in alarm lines to protect water motor alarm • Cast bronze • 20 mesh stainless steel screen • Female NPT blow-off connection with steel plug • NPT female threaded ends as per ANSI B2.1 • 200 PSI rated

Sizes: 1/4" to 2"

Test & Drain Valves



Used to test water flow through sprinkler systems • Ball valve with forged brass body and 3-position lever handle (Off – Test – Drain) • Integral sight glass allows visual inspection of system flow • Restricted orifice with 5.6 or 8.0 K factor for system test • Grooved or NPT female ends • 300 PSI rated • UL listed • FM approved

Sizes: 1" to 2"

Actuated Valves



Used in areas where manually operated valves are impractical because of inaccessibility, maintenance requirements, or other issues • Actuators can be fitted to most types and sizes of quarter-turn or multi-turn valves • Electric actuators with NEMA 4 or NEMA 7 rated enclosure can be furnished for sites where electrical power is available • Pneumatic actuators are available for applications where plant air is preferred for operation

Applications

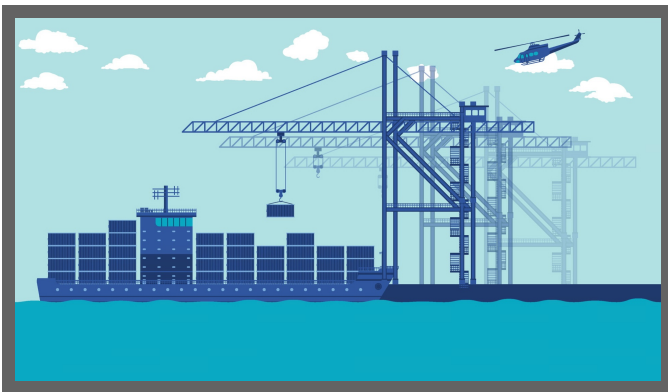
Here are just a few typical applications of the fire protection valves sold by IFW Products LLC.



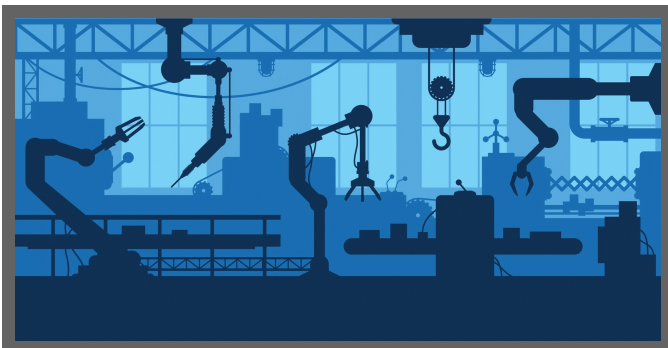
Commercial Construction



Energy



Marine



Manufacturing

More Products

IFW Products LLC is your complete source for fire protection products. Here are some of the other products we offer:

- Hose & Standpipe Equipment
- Backflow Prevention
- Fire Sprinkler Accessories
- Cabinets & Equipment Storage
- Pipe Fittings
- Fire Hydrant Accessories

Valve Cross Reference

Valve Type	American AVK	Midland	Mueller Steam	Sigma	United Brass
Gate Valves	145FFO	9610F	—	OSY1	—
	145GFO	—	—	OSY3	—
	145GGO	—	—	OSY2	—
	45FFP	—	—	NRS1	—
	45MFP	—	—	NRS3	—
	45MMP	—	—	—	—
Check Valves	5190SCV	—	—	UFPN5	67
	—	—	—	—	68
	—	—	—	—	68TXG
Indicator Posts	34OX	9600IPA412	—	UFP011	—
	34BX	—	—	UFP012	—
Butterfly Valves	815	—	—	UFPN3	—
Brass Trim Valves	970SCV	—	—	CVS	99S
	970BLV	9401	—	BLV	80
	970GLV	—	—	GLV	125S / 125SUL
	970AGV	—	—	GLVA	126S / 126SUL
Wafer Check Valves	—	—	71U	UFPN2	90
OS & Y Valves	—	—	—	GTV	18
Flanged Swing Check Valves	—	9620UL	—	—	—
Strainers	—	9405	—	—	200
	—	—	595	—	—
	—	—	911	—	—

Note: This information is intended to indicate similarity in size, function, and general specifications. It is not intended to imply that the items are identical to one another. It is the user's responsibility to determine the suitability of a particular product for its intended use.

For cross reference to manufacturers not listed above, contact customer service.